

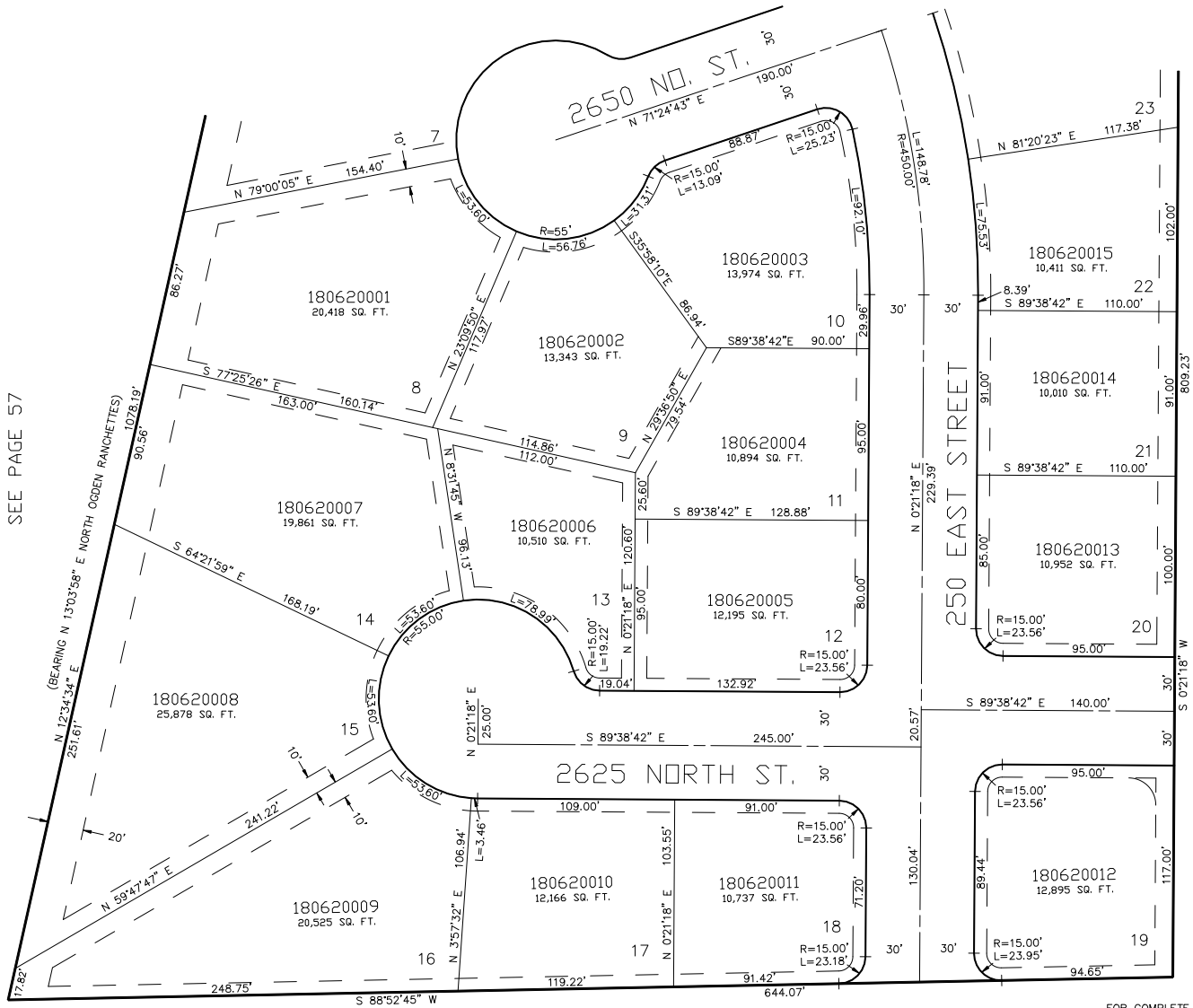
PART OF THE S.E. 1/4 OF SECTION 29, T.7N., R.1W., S.L.B. & M.
COUNTRY NORTH ESTATES SUBDIVISION

LOTS 8 - 22

TAXING UNIT: 10

IN NORTH OGDEN CITY
SCALE 1" = 50'

SEE PAGE 61



SEE PAGE 57

SEE PAGE 49

7' UTILITY & DRAINAGE EASEMENTS EACH
SIDE OF PROPERTY LINES AS INDICATED
BY DASHED LINES EXCEPT AS OTHERWISE
SHOWN.

FOR COMPLETE ENG DATA SEE
ORIGINAL DEDICATION PLAT IN
BOOK 21, PAGE 67 OF RECORDS.

SEE PAGE 48